

RecScreen®  
7000

3%



RECASENS  
BCN 1886

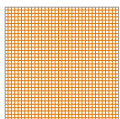




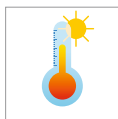
RecScreen®

7000

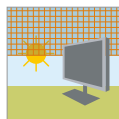
3%



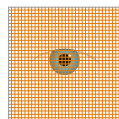
Low opening



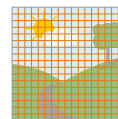
Thermal comfort



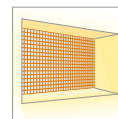
Glare control



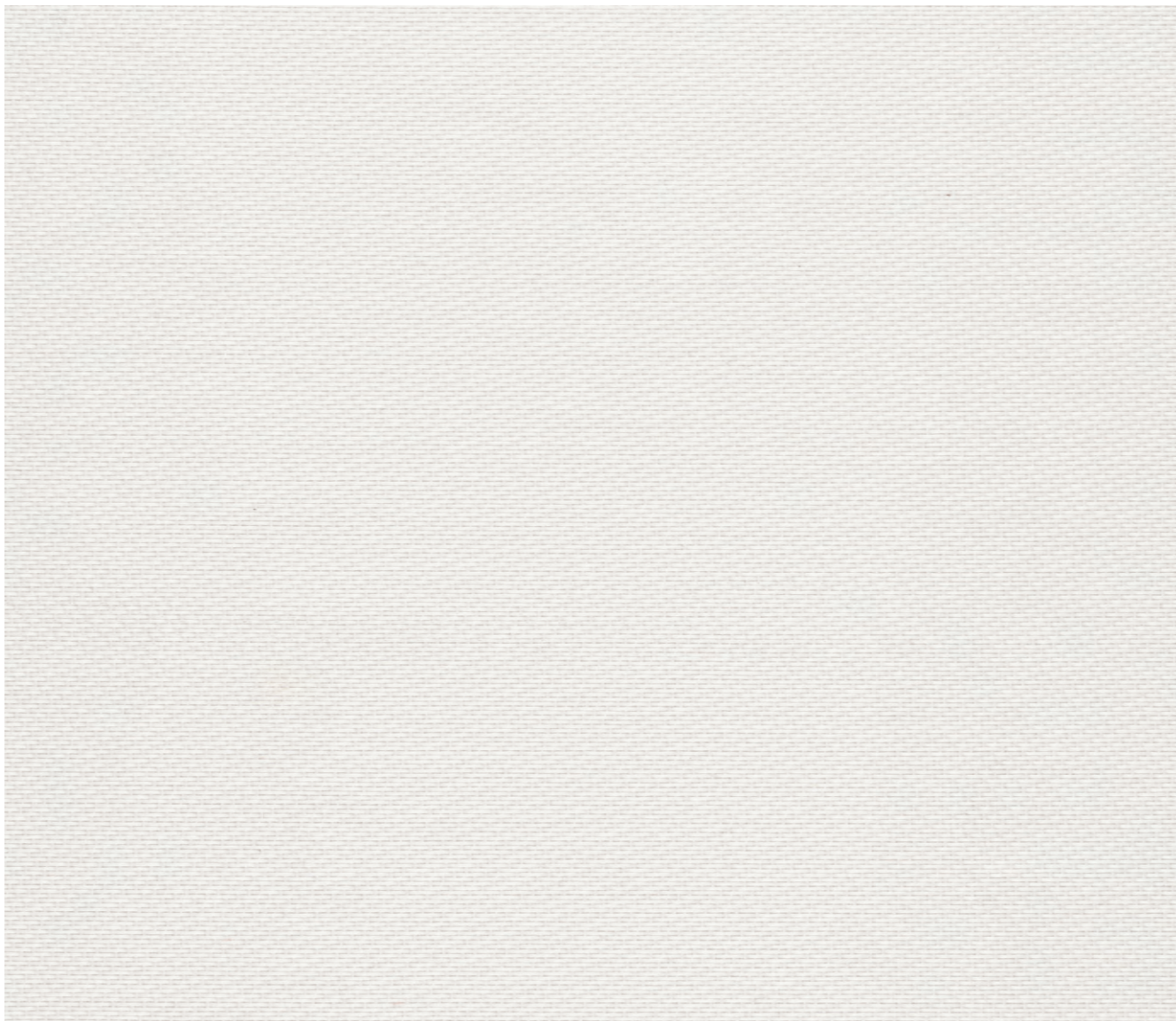
Privacy



Visibility to the outside

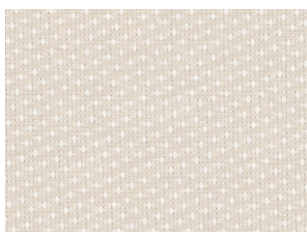


Natural light



R-000

White-White



R-001

White-Linen



R-004

White-Pearl Gray



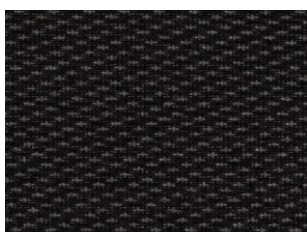
R-700

Anthracite-Anthracite



R-307

Black-Bronze



R-300

Black-Black

# RECOMMENDED APPLICATIONS - RESIDENTIAL AND TERTIARY

INTERIOR DESIGN AND DECORATION			
INDOOR SOLAR PROTECTION		R	T
Roller blinds or curtains for windows		✓	✓
Roller blinds or curtains for enclosures		✓	✓
Roller blinds for roof windows		✓	✓
Folding blinds		✓	✓
Vertical blinds		✓	✓
Japanese panels		✓	✓
Folding awnings		✓	✓
Shade sails		✓	✓
Tensioned textiles under skylights		✓	✓
INDOOR FURNITURE		R	T
Cushions		✓	✓
Armchairs and sofas		✓	✓ (*)
Seats and chairs		✓	✓ (*)
Footstools and pouffes		✓	✓
Office chairs		✓	✓
INDOOR TEXTILE ARCHITECTURE		R	T
Access to premises		✓	✓
Wall coverings		✓	✓
Ceiling coverings		✓	✓
Ceilings with skylights		✓	✓
Separators and screens		✓	✓
Wrappings for isolated elements		✓	✓
Decorative accessories		✓	✓

FACADES AND ENCLOSURES			
OUTDOOR BLINDS		R	T
Roller blinds for windows or facade awnings		✓	✓
Roller blinds for glazed enclosures		✓	✓
Roller blinds for roof windows		✓	✓
Roller blinds for skylights		✓	✓
AWNINGS		R	T
Folding awnings		✓	✓
Drop-arm awnings		✓	✓
Classic awnings		✓	✓
Invisible arm awnings (2)		✓	✓
Roller drop awnings (3)		✓	✓
Vertical or downward awnings		✓	✓
Hoods or fixed canopies		✓	✓
Retractable hoods or Dutch awnings		✓	✓
COVERINGS AND ENCLOSURES		R	T
Fixed pergolas and walkways		✓	✓
Roofs with fabric enclosures		✓	✓
Walls with fabric enclosures		✓	✓
Verandas (4)		✓	✓
Pergolas with folding awning		✓	✓
FACADES		R	T
Fixed or sliding panels		✓	✓
Balcony coverings and technical elements		✓	✓

OUTDOORS AND TEXTILE ARCHITECTURE			
OUTDOOR SOLAR PROTECTION		R	T
Umbrellas and sunshades		✓	✓
Self-supporting double awning (5)		✓	✓
Shade sails		✓ (**)	✓ (**)
Arbours		✓	✓
Canopies		✓	✓
Privacy screens and windbreaks		✓	✓
OUTDOOR FURNITURE		R	T
Cushions		✓	✓
Sun loungers		✓	✓
Armchairs and sofas		✓	✓
Seats and chairs		✓	✓
Footstools and pouffes		✓	✓
Deckchairs		✓	✓
Portable sun loungers		✓	✓
Portable armchairs and sofas		✓	✓
Portable seats and chairs		✓	✓
Portable stools		✓	✓

- (1) Up to 12m in line and 9m drop with Llaza ironworks.  
 (2) Depending on awning model, up to 6.25m in line and 4.5m extension with 2 arms and Llaza ironworks. Ask for more information about maximum dimensions for multi-arm awnings.  
 (3) For awnings up to, approximately, 4/5m in line x 3/2.75m extension.  
 (4) Depending on model, up to 4.75/5.5m in line x 6.5/5.5 extension with 2 guides and Llaza ironworks, with both line and extension being adjustable whilst maintaining the same surface area of fabric. Ask for more information about maximum dimensions with more than 2 guides.  
 (5) Up to 6m in line and 2 x 2.5m extension, with 2 arms and Llaza ironworks.  
 (\*) For upholstery of mobile furniture (not for upholstery for fixed seats that make up part of the project in cinemas, theatres, auditoriums, assembly halls, etc.).  
 (\*\*) Small dimensions.



RecScreen®  
7000

## THERMAL FACTORS

RECScreen 7000 3% openness factor		THERMAL FACTORS											UV
		FABRIC			FABRIC + GLAZING IN PARALLEL POSITION								TUV ( $\tau_{uv}$ )
					Type C Glazing		Type D Glazing		Type C Glazing		Type D Glazing		
REF.	COLOUR	TS ( $\tau_{e,B}$ )	RS ( $\rho_{e,B}$ )	AS ( $\alpha_{e,B}$ )	$g_{tot\ int}$	THERMAL COMFORT CLASS	$g_{tot\ int}$	THERMAL COMFORT CLASS	$g_{tot\ ext}$	THERMAL COMFORT CLASS	$g_{tot\ ext}$	THERMAL COMFORT CLASS	
R-000	White-White	18,1	69,3	12,6	0,35	2	0,25	2	0,13	3	0,09	4	2,8
R-001	White-Linen	18,7	62,7	18,6	0,37	1	0,25	2	0,14	3	0,10	4	2,8
R-004	White-Pearl Gray	15,9	58,6	25,5	0,38	1	0,26	2	0,13	3	0,09	4	3,5
R-300	Black-Black	2,9	3,6	93,5	0,56	0	0,31	2	0,10	3	0,09	4	2,9
R-307	Black-Bronze	4,2	3,7	92,1	0,56	0	0,31	2	0,11	3	0,09	4	3,8
R-700	Anthracite-Anthracite	2,4	7,3	90,3	0,54	0	0,30	2	0,10	4	0,08	4	2,0

The  $g_{tot}$  values are provided for standard glazing types C and D. Please contact us to request the  $g_{tot}$  study relating to any other kind of standard glazing or specific glazing for the project.

## THERMAL FACTORS

### FABRIC

**TS** ( $\tau_{e,B}$ ): Solar transmittance factor of the fabric in %

**RS** ( $\rho_{e,B}$ ): Solar reflection factor of the fabric in %

**AS** ( $\alpha_{e,B}$ ): Solar absorption factor of the fabric in %

### FABRIC + GLAZING

**$g_{tot\ int}$** : Total solar energy transmittance factor.  
Glass + fabric in parallel position / Fabric on the inside.

**$g_{tot\ ext}$** : Total solar energy transmittance factor.  
Glass + fabric in parallel position / Fabric on the outside.

$$100\% \text{ SOLAR RADIATION} = RS + AS + TS$$

#### RS SOLAR REFLECTION

Solar energy reflected by the material towards the outside

#### TS SOLAR TRANSMISSION

Solar energy that goes through the material.

#### AS SOLAR ABSORPTION

Solar energy absorbed by the material.

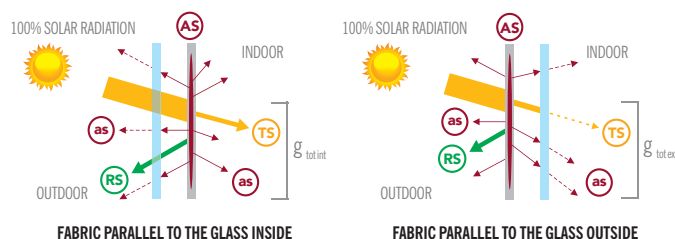
#### as

solar radiation absorption in the form of heat outside and inside.

## TYPES OF GLAZING

**Type C Glazing:**  $g = 0.59$  Total solar energy transmittance factor  
 $U = 1.20 \text{ W/(m}^2\text{.K)}$  Thermal transmittance coefficient  
Double glazing (4mm float + 16mm chamber + 4mm float), with low emission coating in position 3 (outer surface of the indoor glass), chamber filled with argon.

**Type D Glazing:**  $g = 0.32$  Total solar energy transmittance factor  
 $U = 1.10 \text{ W/(m}^2\text{.K)}$  Thermal transmittance coefficient  
Double glazing (4mm float + 16mm chamber + 4mm float), with low emission coating in position 2 (inner surface of the outdoor glass), chamber filled with argon.



## ULTRAVIOLET FACTORS

**TUV** ( $\tau_{uv}$ ): Total ultraviolet spectrum transmission factor in %

# BIM RECASENS & LLAZA

In order to facilitate the work of all those involved in the project, as well as to provide the possibility of performing an energy calculation for our products and adapting it to the specific project data, RECASENS & LLAZA subscribe to the BIM methodology, making their entire range of fabrics converted into BIM aims available to users. The BIM aims of RECASENS & LLAZA are available in Revit® and Archicad® formats, in Spanish and English. At [www.bimobject.com/es](http://www.bimobject.com/es) you will be able to do the following after registering:

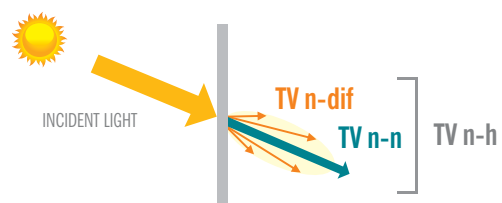
- Download products in Revit®, Archicad®, IFC® formats, etc.
- Download catalogues and manuals
- Request information and advice for your project

**bimobject®**



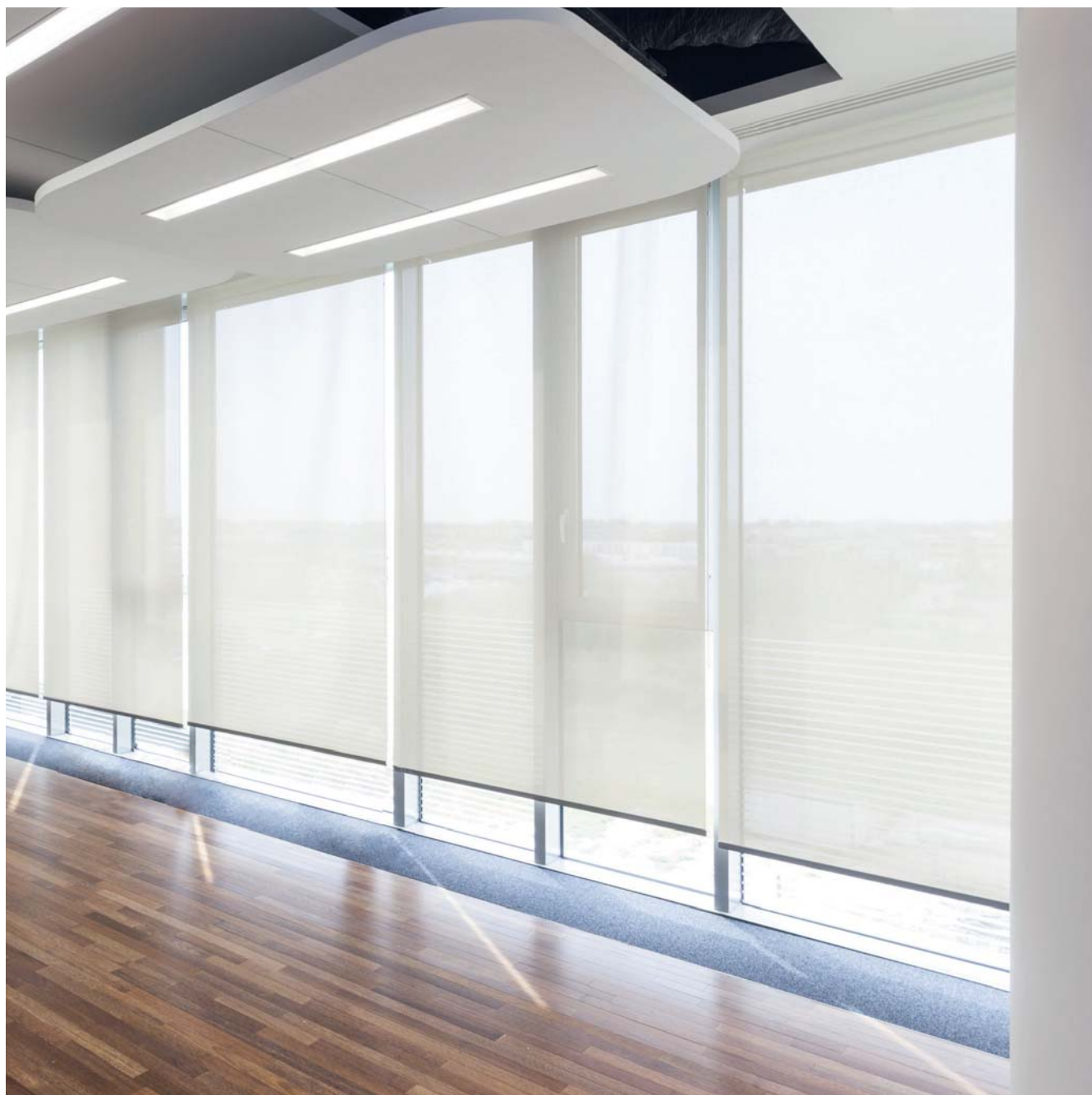
## VISUAL PROPERTIES

RECSCREEN 7000 3% openness factor		OPTICAL FACTORS
REF.	COLOUR	TV n-h ( $\tau_{v, n-h}$ )
R-000	White-White	14,9
R-001	White-Linen	15,6
R-004	White-Pearl Gray	13,2
R-300	Black-Black	2,9
R-307	Black-Bronze	4,1
R-700	Anthracite-Anthracite	2,2



### OPTICAL FACTORS

**TV n-h ( $\tau_{v, n-h}$ ):**  
Normal-hemispheric light transmittance in %



FABRIC CHARACTERISTICS	RECSCREEN 6000	STANDARD
Composition	30% PES HT - 70% PVC	
Type of fabric	Twill polyester screen	
Yarn diameter	0,30 mm	
Openness factor	3%	UNE-EN 14500:2010
Colour range	6 colours	
Use	Indoor and Outdoor	

TECHNICAL FEATURES		
Weight	440 g/m <sup>2</sup> / 13 oz/yd <sup>2</sup>	UNE-EN 12127:1998
Thickness	0,65 mm	UNE-EN ISO 5084:1997
Width	300 cm / 118"	
Standard roll length	30 m / 32.8 yards	
Tensile strength (warp/weft)	175/155 daN/5 cm	UNE-EN ISO 13934-1:2013
Tear strength (warp/weft)	13/12,5 daN	UNE-EN ISO 13937-2:2001
Resistance to cold and heat after tropicalisation test	-30°C / +70°C -22°F / 158°F	UNE 53243-22:1978
Colour fastness to artificial light - Xenotest	4 (Good) Grey scale 7 (Very good) Blue scale	UNE-EN ISO 105 B02:2014
Colour fastness to artificial weathering - Xenotest	4 (Good) Grey scale	UNE-EN ISO 105 B04:1998
Antimicrobial activity	Up to 95% bacteria growth reduction No fungi growth, fungistatic fabric - Grade 0	AATCC Test Method 100-2012 UNE-EN ISO 846:1998
Fire classification	Class 1 B-s2,d0 (on substrate and with air chamber)	UNE-EN 13773:2003 UNE-EN 13501-1:2007+A1:2009

QUALITY MANAGEMENT SYSTEM		
ISO 9001		ISO 9001:2015

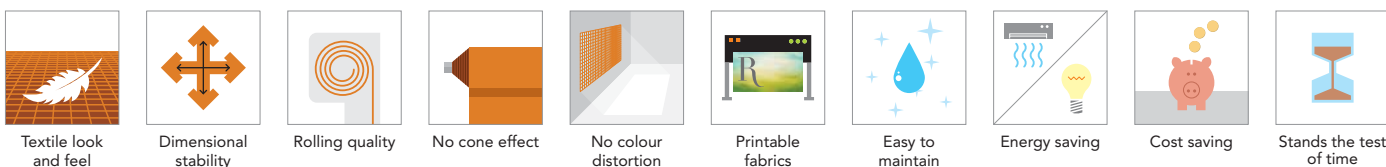
SAFETY, HEALTH AND ENVIRONMENT		
Odour test at temperature of (40 ± 2)°C	2 (Perceptible, not unpleasant)	PV-3900:2000-08
Odour test at temperature of (80 ± 2)°C	2 (Perceptible, not unpleasant)	
Ultraviolet protection factor - UPF	25 to 39 (Very good protection)	AS-NZS 4399:1996



### TEST LABORATORIES



### ADVANTAGES AND BENEFITS



**RECASENS**  
BCN 1886



#### HEADQUARTERS:

Travessera de Gràcia, 18-20. 08021 Barcelona - Spain  
Phone +34 93 200 27 00 - Fax +34 93 202 19 32  
export@recasens.com / cial@recasens.com  
[www.recasens.com](http://www.recasens.com)