



**CARACTERÍSTICAS DEL TEJIDO / FABRIC CHARACTERISTICS**

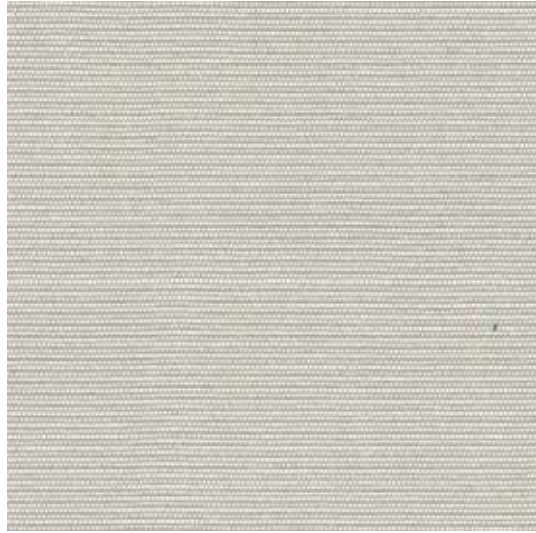
Composición / Composition	35% Fibra acrílica teñida en masa - 65% PVC / 35% Solution dyed Acrylic - 65% PVC	
Tipo de tejido / Type of textile	Acrílico 100% impermeable opaco / 100% Solution dyed Acrylic, waterproof-blockout finished	
Acabado / Finish	Acrílico con reverso PVC opaco mate simil cuero. Acrílico con tratamiento especial "Infinity" para toldos: repele el agua y la suciedad generando una barrera anti-manchas y anti-moho / Acrylic with backside PVC blockout mate finish, simile leather. Acrylic with Special Infinity treatment for Awning applications. Anti-stain, rot-proof water repellent and breathable	
Uso / Use	Exterior / Outdoor	

**CARACTERÍSTICAS TÉCNICAS / TECHNICAL FEATURES**

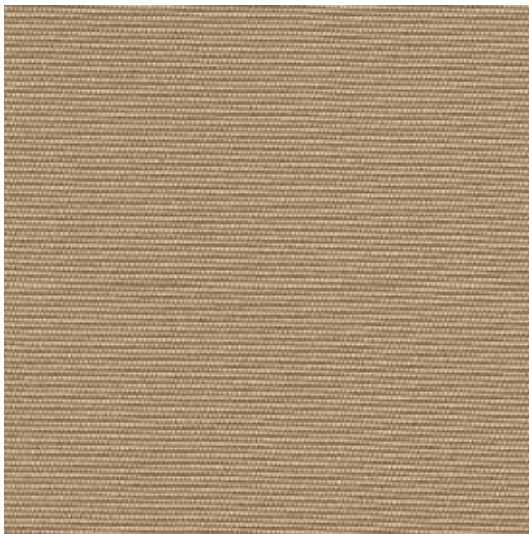
Peso / Weight	900 g/m <sup>2</sup> ± 5%	UNE-EN ISO 2286-2
Espesor / Thickness	0,87 mm	UNE-EN ISO 2286-3
Ancho / Width	220 cm ±1%	
Longitud de pieza / Standard Roll Length	60 m	
Resistencia a la Tracción (Urdimbre / Trama) / Tensile Strength (Warp / Weft)	180/80 daN/5 cm ±5%	UNE-EN ISO 13934-1
Resistencia al Desgarro (Urdimbre / Trama) / Tear Strength (Warp / Weft)	4/3 daN ±10%	UNE-EN ISO 13937-2
Adherencia del recubrimiento / Coating adhesion	2 Kg/cm ±3%	UNE-EN ISO 2411
Solidez del color a la luz artificial - Xenotest / Colour fastness to artificial light - Xenotest	7-8	UNE-EN ISO 105 B02
Solidez del color a la intemperie artificial - Xenotest / Colour fastness to artificial weathering - Xenotest	4-5	UNE-EN ISO 105 B04
Repelencia al aceite / Oil Reppellency	≥ 4	UNE-EN ISO 14419
Repelencia al agua / Water Repellency	≥ 4	UNE-EN ISO 4920



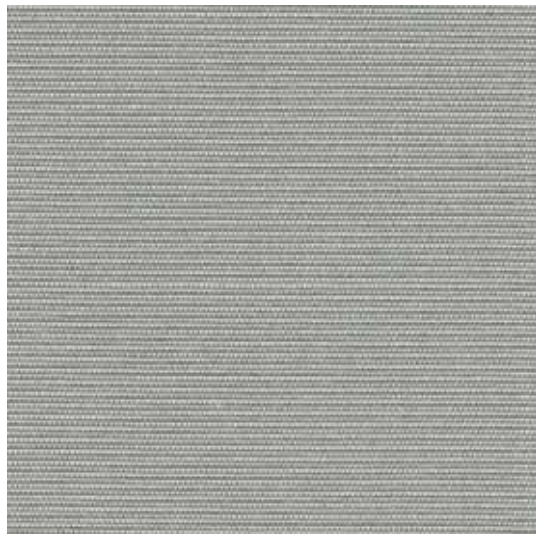
R-099 BLANCO / WHITE



R-117 CRUDO / RAW



R-100 BEIGE



R-138 NUBE / CADET GREY