

RECAFLEX PRO M2



CARACTERÍSTICAS DEL TEJIDO / FABRIC CHARACTERISTICS

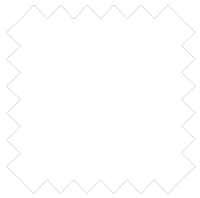
Composición / Composition	Poliéster AT 1100 dtex recubierto de PVC / High Tenacity 1.100 dtex Polyester with PVC coating	
Tipo de tejido / Type of textile	Impermeable translúcido / Translucent waterproof finished	
Acabado / Finish	Liso brillante lacado a 2 caras / Glossy lacquered both sides	
Uso / Use	Exterior / Outdoor	

CARACTERÍSTICAS TÉCNICAS / TECHNICAL FEATURES

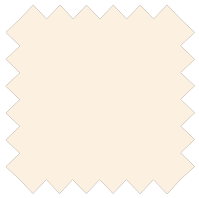
Peso / Weight	590 g/m ² ± 5%	UNE-EN ISO 2286-2
Espesor / Thickness	0,50 mm	UNE-EN ISO 2286-3
Ancho / Width	250 cm ±0,5%	
Longitud de pieza / Standard Roll Length	60 m	
Resistencia a la Tracción (Urdimbre / Trama) / Tensile Strength (Warp / Weft)	260/240 daN/5 cm ±5%	UNE-EN ISO 13934-1
Resistencia al Desgarro (Urdimbre / Trama) / Tear Strength (Warp / Weft)	50/30 daN ±10%	UNE-EN ISO 4674-1
Adherencia del recubrimiento / Coating adhesion	2 Kg/cm ±3%	
Resistencia al frío y al calor / Heat and cold resistance	-30 °C / +70 °C	
Solidez del color a la luz artificial - Xenotest / Colour fastness to artificial light - Xenotest	7-8	UNE-EN ISO 105 B02
Solidez del color a la intemperie artificial - Xenotest / Colour fastness to artificial weathering - Xenotest	4-5	UNE-EN ISO 105 B04
Actividad antibacteriana / Antibacterial activity	Pasa / Pass	UNE-EN ISO 20645-05
Clasificación de reacción al fuego / Fire Classification	M2	UNE 23727



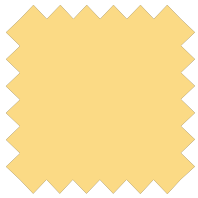
RECAFLEX PRO M2



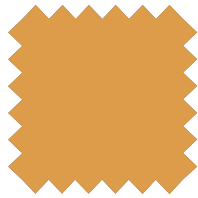
R-099 BLANCO / WHITE



NEW R-005 MARFIL / IVORY



R-004 CREMA / CREAM



NEW R-158 BEIGE



R-036 AMARILLO / YELLOW



NEW R-567 QUISQUILLA / ORANGE



NEW R-082 ROJO OSCURO / DARK RED



R-134 ROSA / PINK



R-075 VIOLETA / VIOLET



R-132 TURQUESA / TURQUOISE



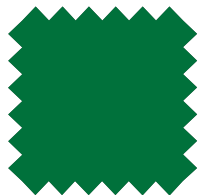
R-174 AZUL / BLUE



R-073 AZUL EUROPA / BLUE



R-131 PISTACHO / PISTACHIO



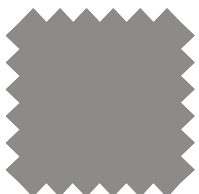
NEW R-165 MANZANA / APPLE



NEW R-166 VERDE / GREEN



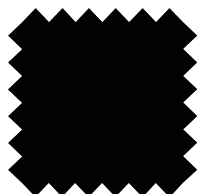
NEW R-167 MUSGO / MOSS



R-095 GRIS CLARO / LIGHT GREY



NEW R-096 GRIS OSCURO / DARK GREY



NEW R-090 NEGRO / BLACK