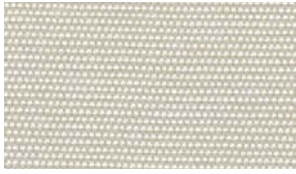
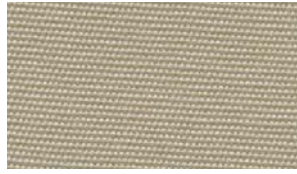




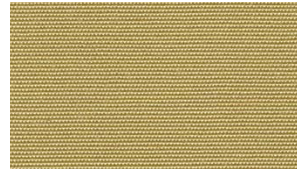
R-099 BLANCO / WHITE



R-117 CRUDO / RAW



R-126 NUEZ / LINEN



R-100 BEIGE



R-139 TOSTADO / HEATHER BEIGE



R-143 CÁÑAMO / HEMP BEIGE



R-775 TWEED LINO / LINEN TWEED



● R-554 AMARILLO / YELLOW



● R-567 NARANJA / ORANGE



NEW R-185 CALABAZA / PUMPKIN



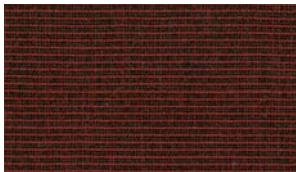
● R-176 ROJO / RED



● R-182 BERMELLÓN / VERMILLION



● R-177 BURDEOS / BURGUNDY



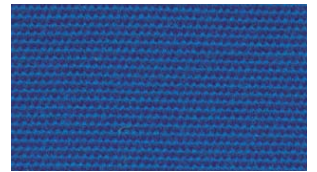
● R-773 TWEED ROJO / RED TWEED



R-104 CASTAÑO / CHESTNUT



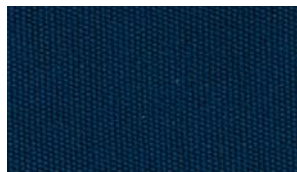
R-156 MARRÓN / BROWN



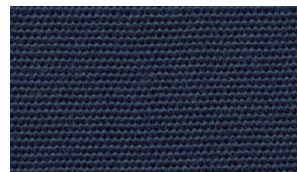
R-172 AZUL / BLUE



R-772 TWEED AZUL / BLUE TWEED



R-170 ALMIRANTE / ADMIRAL BLUE



R-174 ABISMO / NAVY BLUE



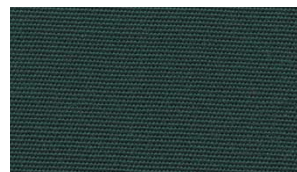
R-175 AZUL MARINO / CAPTAIN NAVY



R-142 ESMERALDA / EMERALD



R-163 VERDE / GREEN



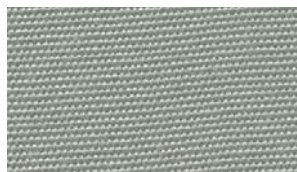
R-102 VERDE MUSGO / FOREST GREEN



R-771 TWEED VERDE / GREEN TWEED



R-123 ARGENTA / ARGENTA GREY



R-138 NUBE / CADET GREY



R-161 GRIS / GREY



R-127 ROCA / MOONROCK



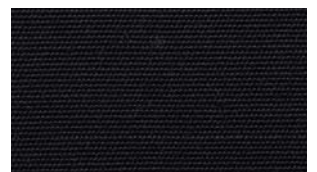
NEW R-198 NIQUEL / NICKEL



R-164 ANTRACITA / CHARCOAL GREY



R-770 TWEED GRIS / CHARCOAL TWEED



R-103 NEGRO / BLACK

Warranty

Because S.A. RECASENS' fabrics are manufactured with only the highest-quality raw materials and the most rigorous quality assurance procedures, we offer a **5 year** warranty on our 100% solution dyed acrylic products.

The warranty protects against the loss of characteristics, rot, mildew and discoloration typical in normal atmospheric conditions. This warranty does not apply against deterioration of any kind due to abusive use, accidental burns, negligence, vandalism, perforations, natural disasters or acts of nature. Normal wear, weather soiling, or stains from environmental pollution or other sources are not covered.

The product must be properly installed and maintained. The warranty, if applicable, does not cover labor, frames, systems and installation supplied by the dealer.

Infinity Process

The **RECacril®** and **RECacril® System** canvases are treated with a special technological process to ensure the lasting quality of the fabric. In this process, nanoparticles completely cover the surface of the fibers in the fabric, forming a permanent coat. After treatment, both the surface and the inside of the fabric are permanently protected against dirt build-up, and adverse effects of a wide variety of atmospheric agents.

The low reactivity and high stability of the Infinity treatment endows long-term protection to the awning, especially against mildew, and provides excellent water and oil repellence.

RECASENS
BCN  1886

Care and Cleaning

Proper care and cleaning should be taken to ensure the life of **RECacril®** outdoor fabrics.

For regular care and maintenance, the excess dirt should be brushed from the fabric using a soft brush; the fabric should then be sprayed with warm water (not exceeding 40°C) and air-dried.

Periodically, the fabric should undergo a more thorough cleaning. Again, brush fabric with a soft bristled brush, spray with warm water, then apply a gentle soap. Let stand for 10 to 20 minutes taking care not to let it dry, then rinse thoroughly and air-dry. Do not use detergents and/or solvents.

Make sure to leave the retractable awning outside until it is completely dried. This prevents mildew from forming.

Technical Specifications

FABRIC CHARACTERISTICS

Composition	100% Solution dyed Acrylic
Type of textile	Reversible Acrylic
Finish	Special Infinity treatment for Awning applications. Anti-stain, rot-proof water repellent and breathable (BS 7209)
Use	Outdoor

TECHNICAL FEATURES

Weight	300 g/m ² ± 5% (UNE-EN 12127)
Thickness	0,55 mm (UNE-EN ISO 5084)
Width	152 cm / 60" ± 1% (standard) 200 cm / 78" ± 1% (optionally)
Standard Roll Length	60 m
Water Column	≥ 300 mm (UNE-EN ISO 20811)
Tensile Strength (Warp/Weft)	135/80 daN/5 cm ± 5% (UNE-EN ISO 13934-1)
Tear Strength (Warp/Weft)	4,5/3,5 daN ±10% (UNE-EN ISO 13937-2)
Colour fastness to artificial light - Xenotest	7-8 (UNE-EN ISO 105 B02)
Colour fastness to artificial weathering	4-5 (UNE-EN ISO 105 B04)
Oil Repellency	≥ 5 (UNE-EN ISO 14419)
Water Repellency	≥ 5 (UNE-EN ISO 4920)

DISTRIBUTED BY

CENTRAL OFFICE:
Travessera de Gràcia, 18-20
08021 Barcelona - (Spain)
Phone +34 93 200 27 00 - Fax +34 93 202 19 32
export@recasens.com
www.recasens.com

